

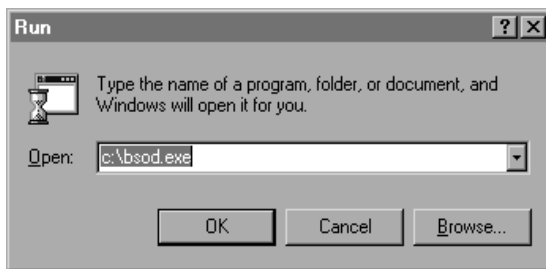


The Rude Screen of Death

Thank you for downloading The Rude Screen of Death, by Noodleroni Software. It designed after a real Blue Screen of Death I saw one day as I was running a check on my system. For the newbies out there, the Blue Screen of Death is Windows' last breath of life when it crashes. BSOD's are scary sometimes, which is why this prank is so fun to play on people (especially computer newbies).

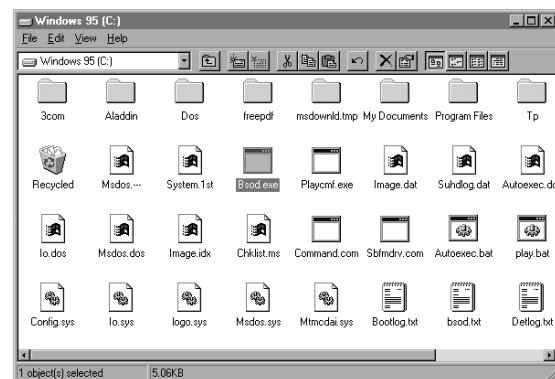
To run this program during Windows:

1. Run the program by using the Start button, Run command, or:
2. Surf to the folder you downloaded it to and double-click it.



Number 1

Then this window should pop up:



Number 2

After the window is up, click this button:



And you're set!

If you should ever have any problems,
email me at tucker@noodleroni.com.